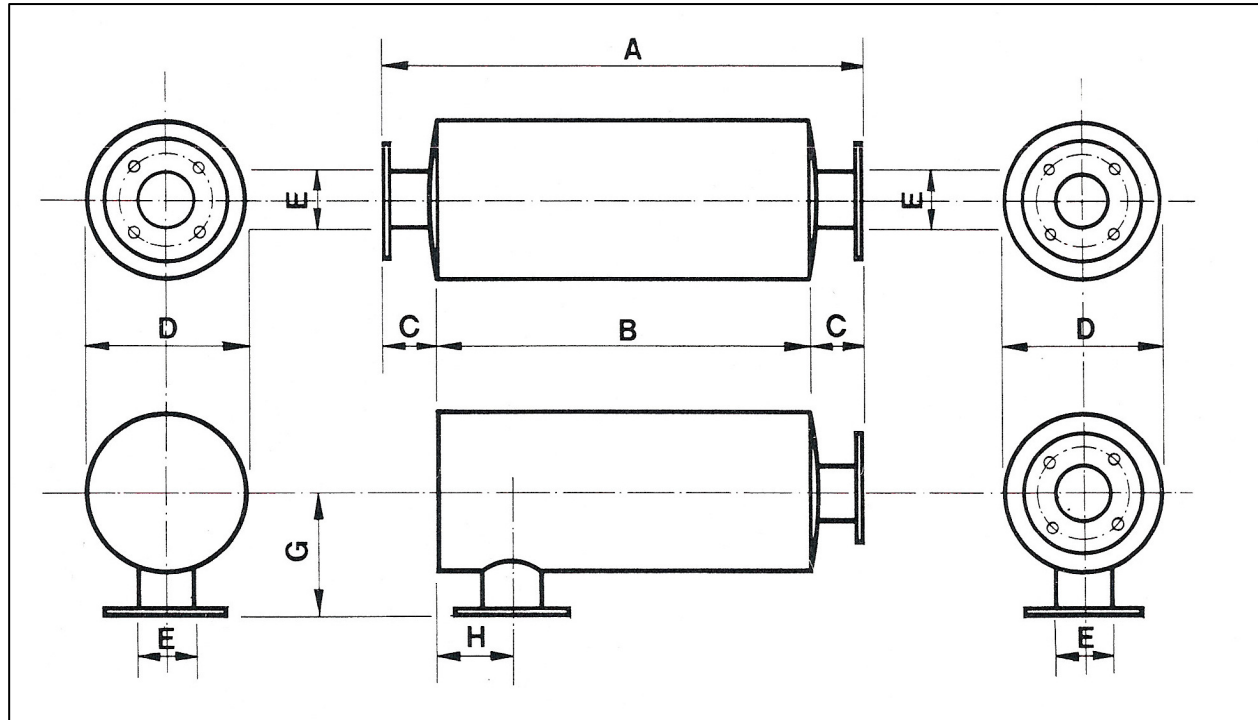


## SE20 UNIVERSAL SILENCER

Options:

- BS10 Table 'D' flanges fitted as standard
- Alternative flange patterns available on request
- B.S.P. connections available on smaller sizes
- Radial / axial inlet
- Radial / axial outlet
- Heat resisting aluminium or black paint
- Shot blast and aluminium metal sprayed
- Stainless steels
- Support feet and brackets
- Lifting lugs
- Drain plugs
- Catalytic converters



*Note: side and bottom inlets & outlets available on request.*

E Bore			A		B		C		D		E		G		H Min		H Max		EST wt Lbs	EST wt Kgs	Peco Part No
4		102	34	864	27.5	699	3.25	83	14.5	368	4	102	10.50	267	4	102	12	305	77	35	SE 204
5		127	39	991	32	813	3.5	89	16.5	419	5	127	11.50	292	4.5	114	16.5	419	97	44	SE 205
6		152	45	1143	38	965	3.5	89	18.5	470	6	152	12.50	318	5	127	17.5	445	153	69	SE206
8		203	56	1422	49	1232	3.75	95	22.5	572	8	203	15	381	6	152	22.5	572	260	118	SE208
10		254	59	1499	50	1270	4.5	114	26.5	673	10	254	18	457	7.25	184	22.5	572	386	175	SE 210
12	*	305	69	1753	62	1575	3.5	89	31	787	12	305	19	483	8.5	216	27	686	560	254	SE 212
14	*	356	79	2007	72	1829	3.5	89	37	940	14	356	22	559	9.5	241	32	813	865	393	SE 214
16	*	406	87	2210	80	2032	3.5	89	41	1041	16	406	24	610	10	254	36	914	1140	518	SE 216
18	*	457	100	2540	92	2337	4	102	47	1194	18	457	27	686	12	305	42	1067	1545	701	SE 218
20	*	508	108	2743	100	2540	4	102	52	1321	20	508	30	762	13	330	45	1143	1960	890	SE 220

